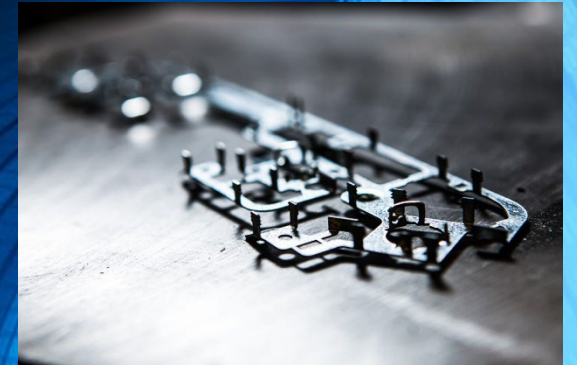
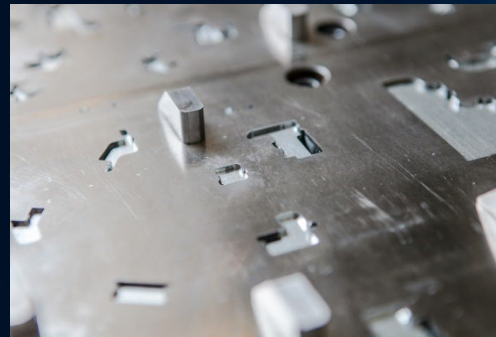
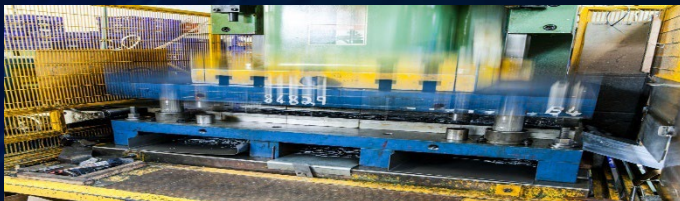


Lynar Manufacturing

COMPANY INTRODUCTION

BY SEAN MURRELLS – TOOL & DESIGN MANAGER





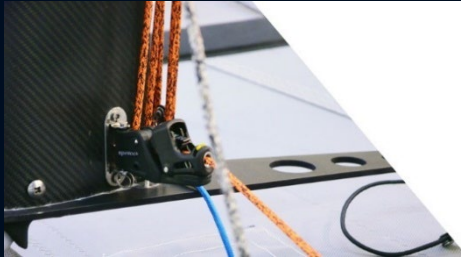
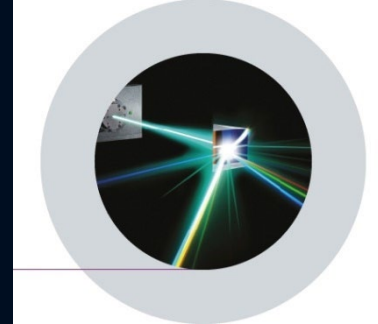
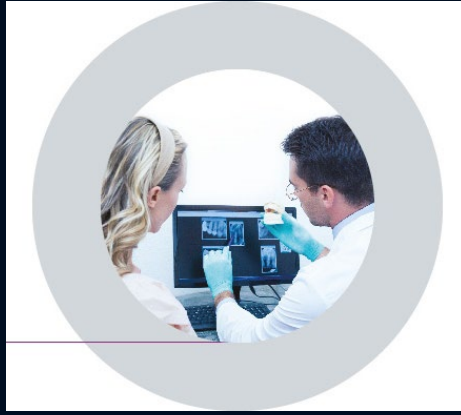
Company Introduction

- Since Lynar Manufacturing was established in 1963, the company has built a first class reputation across the UK for quality, efficiency and reliability in services ranging from one-off prototypes right through to a fully assembled component.
- Our company is led by a management team with years of hands-on experience in engineering, who are committed to ensuring Lynar is at the forefront of new developments in methods and equipment.
- Ongoing investment ensures that we offer clients the most up-to-date resources for tooling and prototypes, wire erosion, metal pressings, sheet metal work and assembly. Taken with the expertise of our skilled team and our focus on quality control, it's a winning combination.
- Lynar Manufacturing is a friendly, family-run business with a professional and quality conscious attitude.



Core Business

- Aerospace
- Agriculture
- Automotive
- Energy
- Furniture
- Lighting
- Marine
- Medical
- Office equipment

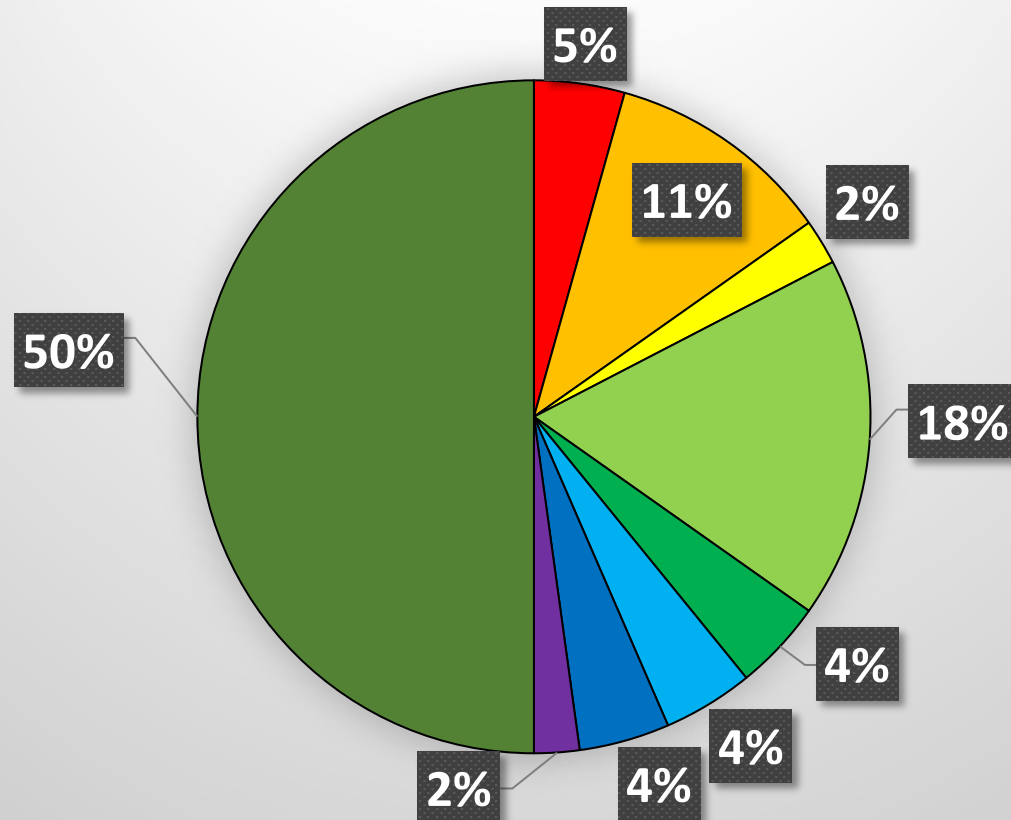


Focus Areas



Customer Base

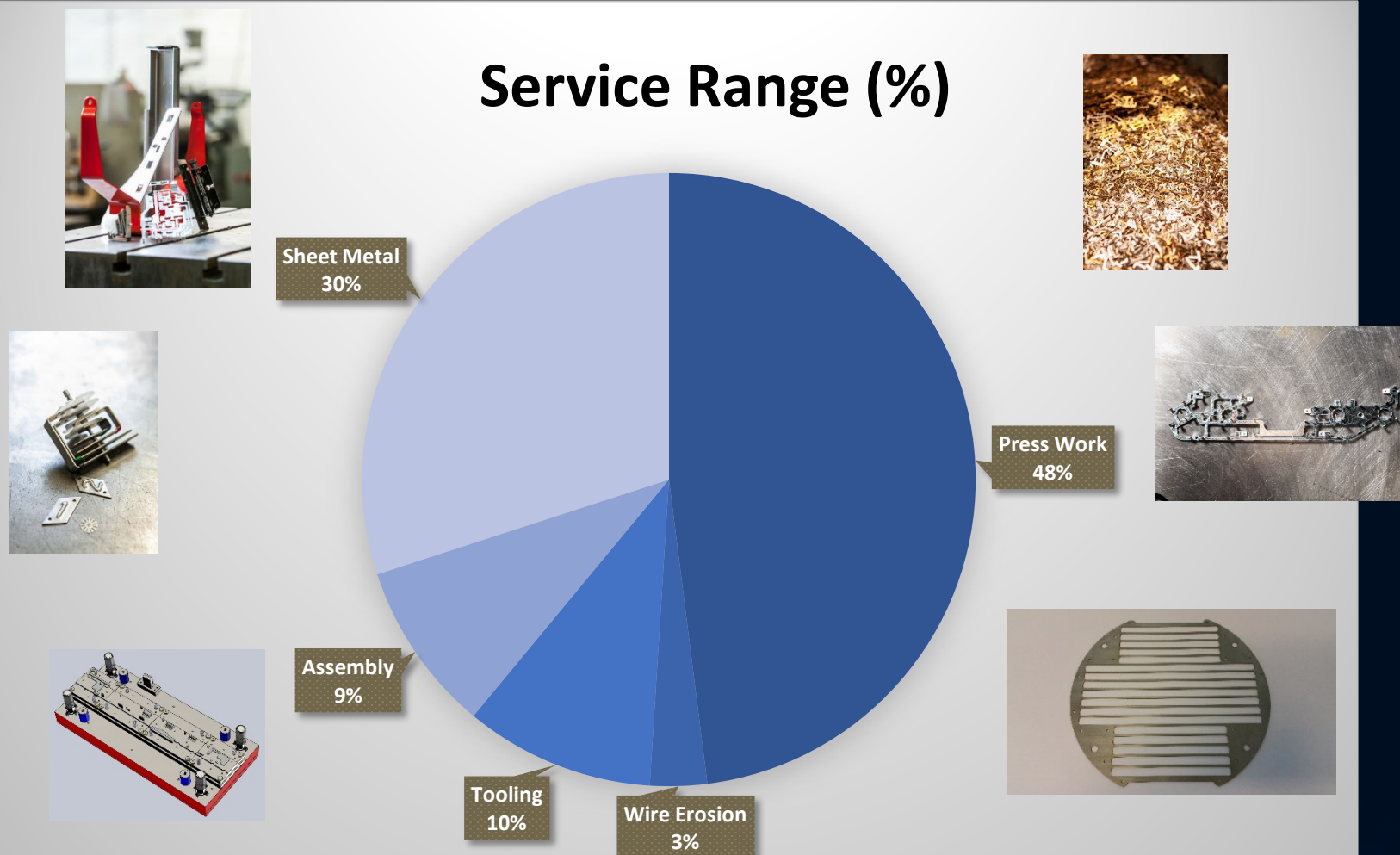
■ Lighting ■ Automotive ■ Science ■ Communications/Electronics ■ Medical ■ Aerospace ■ Retail ■ Marine ■ Other



Lynar Services



Service Range (%)



Breakdown of services

- Toolmaking and metal prototypes
 - At Lynar Manufacturing, our tool room team has the skills and technology to produce high precision press tooling.
 - Our team works on a full range of assignments, from one-off prototypes to creating hundreds of thousands of a single component for ongoing production, for example in the automotive sector.
 - Our in-house expertise and state-of-the-art technology also give us the flexibility to carry out a full range of tooling processes. We design in Solidworks 3D.
 - Whether you require simple pierce and blank and form tools or multi-stage, full progression tooling, we will deliver on time and cost-effectively, with the consistency in product and quality that clients look for.
 - We can also offer clients competitive pricing by providing quotations for two options, production or tooling. Tooling prices can reduce the cost per components by up to half.
 - Our tooling and toolmaking services are further enhanced by our in-house wire erosion capacity and we also have an in-house CNC machine which helps for tooling and sub contract production work.



Breakdown of services

- Wire erosion
 - Lynar Manufacturing is a pioneer in wire erosion. We were one of the first UK companies to introduce wire eroding technology, almost 40 years ago, and today we continue to be recognised as a specialist in the field.
 - Our wire erosion facilities enable us to carry out high precision, no contact cutting of any shape of metal, working with thicknesses ranging from 250mm down to 0.05mm.
 - Particularly suitable for both the most fragile and hardened materials, wire erosion enables us to work to the finest tolerances.
 - The flexibility and accuracy of this process also means that we can produce items to the most challenging client specifications, quickly, efficiently and on time.
 - We regularly provide a sub-contract wire erosion service to other manufacturers while the way we integrate wire erosion with our tooling and tool making processes enables us to offer even greater scope of production to our clients.
 - New state of the art Sodick Wire erosion machine installed Dec 2015



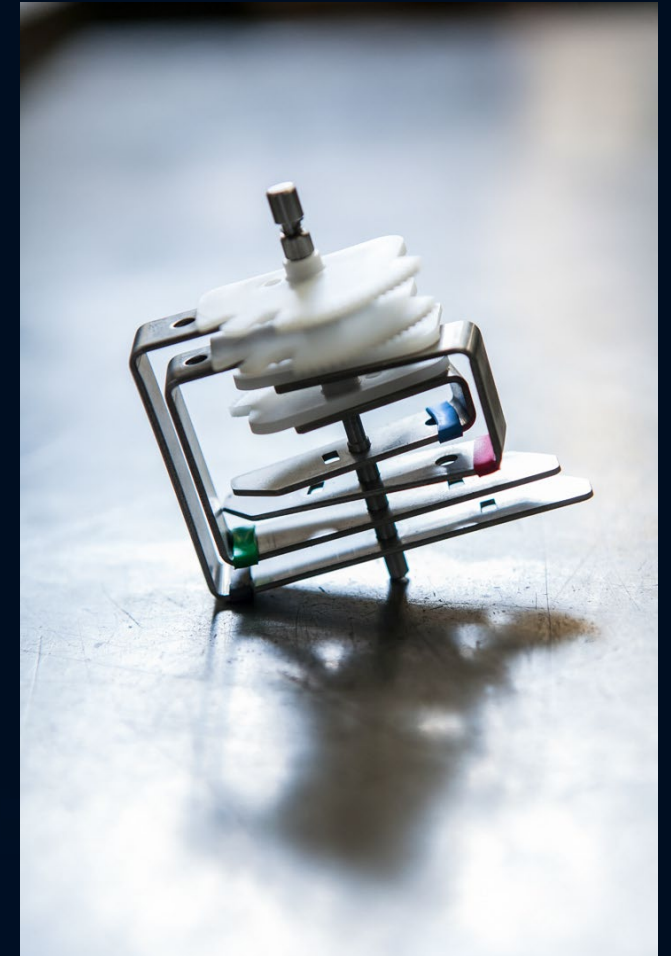
Breakdown of services

- Metal press shop
 - Lynar Manufacturing's metal press shop is equipped with a range of state-of-the-art presses and feed lines, giving us the flexibility to produce many different types of components to meet individual client requirements.
 - We can make simple components requiring a single pressing or carry out a number of runs to produce much more complex items, in small batch runs or in high volumes.
 - Our metal press shop also offers integral drilling, tapping, bushing and welding capacity and assembly services. We can also offer plating and powder-coating through the strong relationships we have gained with external suppliers over the years.
 - Whether we are working on a one-off sample or a high volume order, we deliver maximum precision and quality and best value to our clients, in terms of both cost and turnaround times.



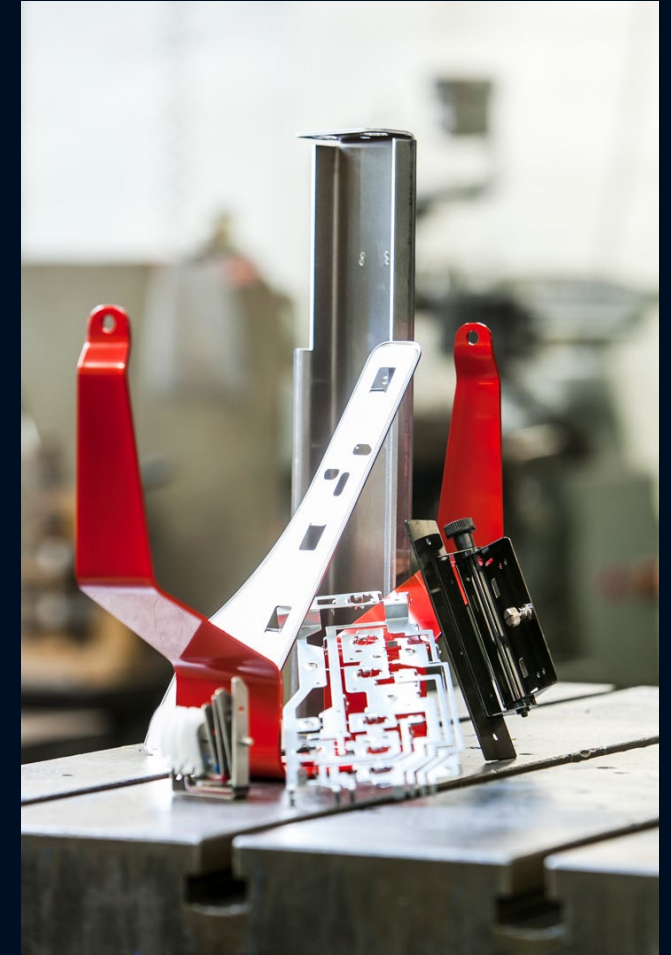
Breakdown of services

- Metal parts assembly
 - As part of Lynar Manufacturing's one-stop shop solution, we offer a complete assembly service, tailored to client requirements.
 - We can handle all aspects of hand and mechanical assembly and any batch sizes, from prototypes to large scale production.
 - As well as streamlining production for our clients, this in-house service offers another process level at which we can inspect and verify the quality of each item we produce, prior to dispatch. This ensures that only items that meet specified standards reach our customers.



Breakdown of services

- Sheet metal working
 - Lynar Manufacturing's sheet metal team works with a variety of ferrous and non-ferrous metals, including stainless steel, mild steel and aluminium.
 - The service incorporate punching, bending, machining, painting, printing and assembly and because we carry out all types and stages of sheet metal working in-house, we have full control of production.
 - As a result, clients benefit from the way we are able to co-ordinate quality, cost and delivery times to deliver maximum value.



Breakdown of services

- Quality
 - Lynar Manufacturing has invested in the latest technology CMM machine to aide inspection and quality functions.
 - Manual CMM with Inspect Pro 3d software enabling easier ISIR / FAIR & CAP study reports.
 - Reverse engineering capability which includes Dino Light Digital Microscope for visual measurement.



NEW JULY
2023

Plant List - Toolroom



- 1 off Sodi-tech VL600Q Wire Erosion Machine
- 1 off Jones & Shipman 1400 LAR Surface Grinder
- 1 off Jones & Shipman 1400 Surface Grinder
- 3 off Jones & Shipman 540 Surface Grinder, c/w Optidress
- 1 off Quantum 665 CMM
- 3 off Bridgeport Vertical Milling Machines c/w DRO
- 1 off Asquith-Archdal Radial Drilling Machine
- 1 off Cincinneti Vertical Milling Machine
- 1 off Adcock Shipley 25 Vertical Milling Machine
- 1 off Archdale Horizontal Milling Machine
- 1 off Qualters & Smith Power SW
- 2 off Startright Bandsaws (1 large, 1 standard)
- 4 off Piller Drills Various
- Drilling, Tapping, MIG Welding & Spin Riveting Facilities



Plant List – Press Shop

- 1 off butterfly 75 Ton Power Press
- 1 off SMV 80 Ton Power Press, c/w Roll Feed, De-Coiler/Straightener
- 1 off Fonyu 160 Ton Power Press c/w Roll Feed, De-Coiler/Straightener
- 1 off Pressix 100 Ton Power Press c/w Roll Feed, De-Coiler/Straightener
- 1 off Pressix 65 Ton Power Press c/w Roll Feed, De-Coiler/Straightener
- 1 off Rhodes 40 Ton Power Press
- 1 off Worchester 6 Ton High Speed Press
- 1 off Hare 25 Ton Press with Die Cushion
- 1 off Hare 5 Ton Press
- 3 off Fly Presses, Various
- 4 off Material De-Coilers
- 3 off Material Straighteners
- 1 off Vanco Barrel Mase All Machine
- 1 off Vibrosheen De-Burring Machine
- 1 off Guyson Bead Blaster
- 1 off TECNA Sportwelder
- 1 off Pemsetter 12 tons
- 1 off Startrite Cut Off Saw



Quality

- Lynar Manufacturing Ltd is dedicated to the quality policy that will ensure that its design and manufacturing services fully meet the requirements of its customers at all times. The goal of the company is to achieve a high level of customer satisfaction at all times. Commitment to the implementation of supporting managerial and business operational systems is essential to realising that goal.
- Lynar Manufacturing Ltd believes in the concept of client and supplier working together in pursuing this policy and in continually striving for improvements in design, manufacturing, quality and safety. Ensuring that legal obligations and commitments are maintained.
- The quality policy is based on 3 fundamental principles:
 - Ensuring that we fully identify and conform to the needs of our customers.
 - Looking at our service provision processes, identifying the potential for errors and taking the necessary action to eliminate them.
 - Everyone understanding how to do their job and doing it right first time.
- To ensure that the policy is successfully implemented, staff will be responsible for identifying customer requirements, and ensuring that the correct procedures are followed to meet those requirements.
- Objectives needed to ensure that the requirements of this policy are met and that continual improvement is maintained in line with the spirit of the policy, will be set, determined and monitored at Management Review.
- The quality policy principles and objectives will be communicated and available to staff at all times. Training will be an integral part of the strategy to achieve the objectives.
- Within this Policy we are committed to operating our Company under the disciplines and control of a Quality Management System conforming to the International Standard ISO 9001:2015, planned and developed jointly with our other management functions.

